

— —

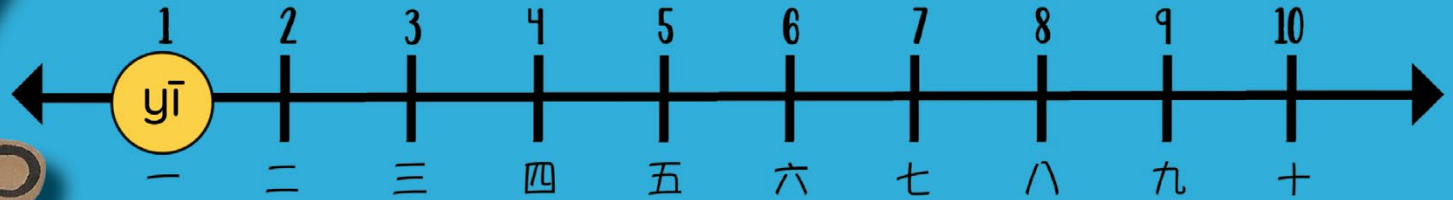
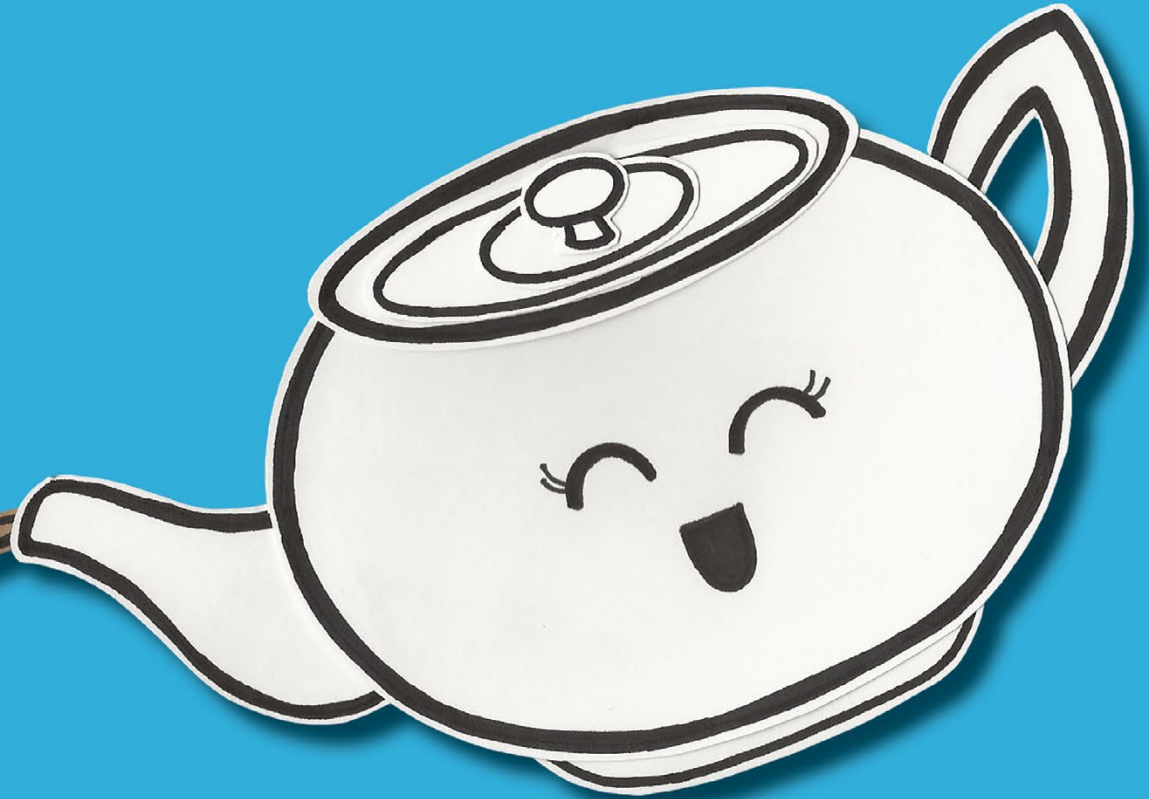
yī

壺 茶
hú chá

1

one

pot of tea





Fun Fact: When counting to two in Chinese, you say 二 (èr).
When referring to two objects, you say 兩 (liǎng).



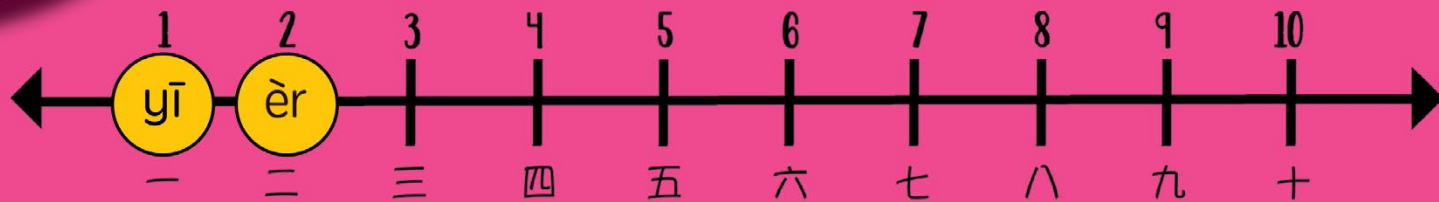
兩 ㄌㄧㄤˇ
liǎng

個 ㄍㄜˋ 荷 ㄏㄜˊ 葉 ㄧㄝˋ 糯 ㄋㄨㄛˋ 米 ㄇㄧˇ 飯 ㄈㄢˋ
ge hé yè nuò mǐ fàn

2

two

lotus wrapped rice



三
三
三
sān

條 牛 肉 腸 粉
tiáo niú ròu cháng fěn

3

three

beef rice rolls

